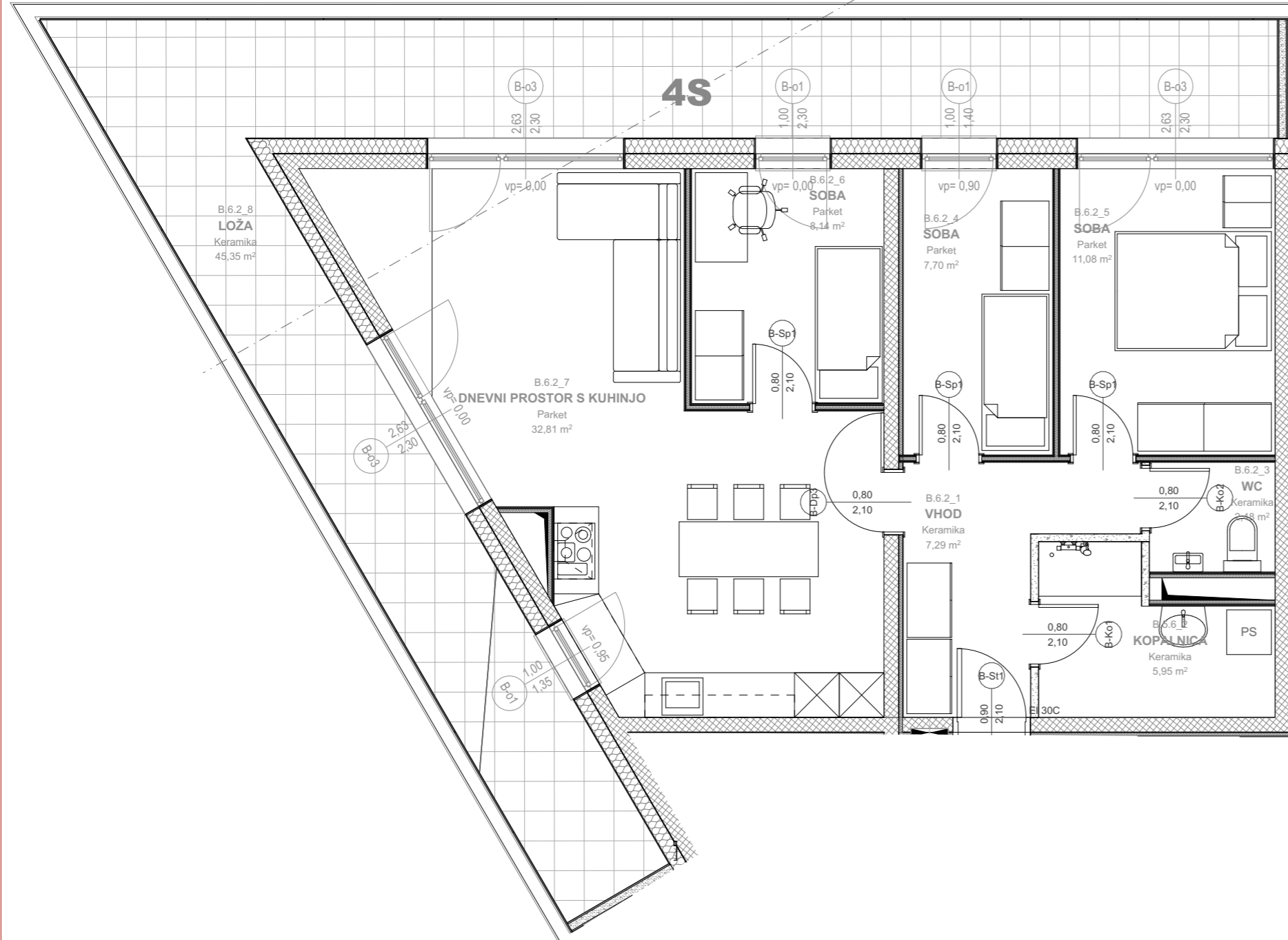


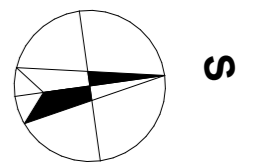
SOSKA RADENCI DOLNOV



Stanovanje B.6.2

B B.6.2

| Št. pr. | Prostor | Tlak | Površina m ² |
|--------------|--------------------------|----------|----------------------------|
| 6 nadstropje | | | |
| B.6.2_1 | VHOD | Keramika | 7,29 |
| B.6.2_3 | WC | Keramika | 2,48 |
| B.6.2_4 | SOBA | Parket | 7,70 |
| B.6.2_5 | SOBA | Parket | 11,08 |
| B.6.2_6 | SOBA | Parket | 8,14 |
| B.6.2_7 | DNEVNI PROSTOR S KUHINJO | Parket | 32,81 |
| | | | 69,50 m² |
| 6 nadstropje | | | |
| B.6.2_8 | LOŽA | Keramika | 45,35 |
| Pritličje | | | |
| B.6.2_S | SHRAMBA | Keramika | 3,13 |



0 2 5 10 M 1:500



0 1 2 M 1:70

List številka:
A-117/236